

NEWS

Women in Architecture Events • Women in Academia • Projects by Women-Owned Firms

Exhibitions Highlight Architecture by Women

THE 1990s MAY BE THE DECADE OF THE woman architect. This year alone, the number of female AIA chapter presidents reached 27 compared to 11 in 1985; 20 new AIA Women in Architecture Committees have emerged; and a series of exhibitions and events are being held across the country to celebrate women's accomplishments at every level of the profession.

This fall, a variety of AIA-sponsored exhibitions document work by contemporary women architects and designers. At the Baltimore and San Francisco AIA chapters, projects by women will be on display through the end of the month. Later in the year, the Connecticut, Boston, Virginia, and Puerto Rico components will host similar exhibitions. In February 1992, the Santa Barbara Museum of Art will exhibit original drawings by 1920s-era architect Lulah Maria Riggs illustrating her interpretation of Southern California Spanish Colonial Revival style. And the Portland, Oregon, AIA chapter plans to open the first of a series of traveling exhibitions, "MatriArchs: Pioneering Women Architects," next July.

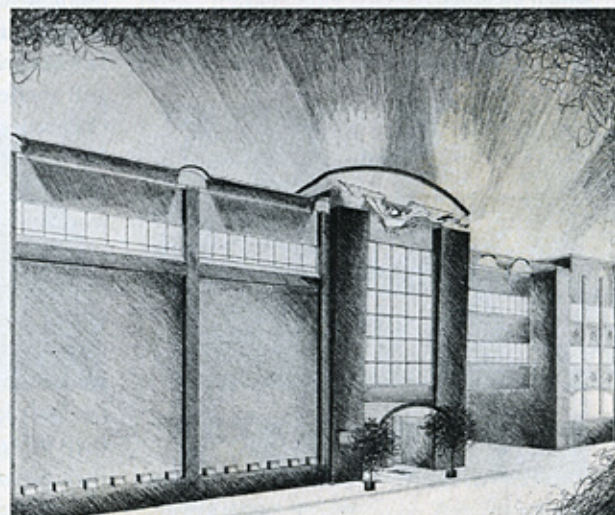
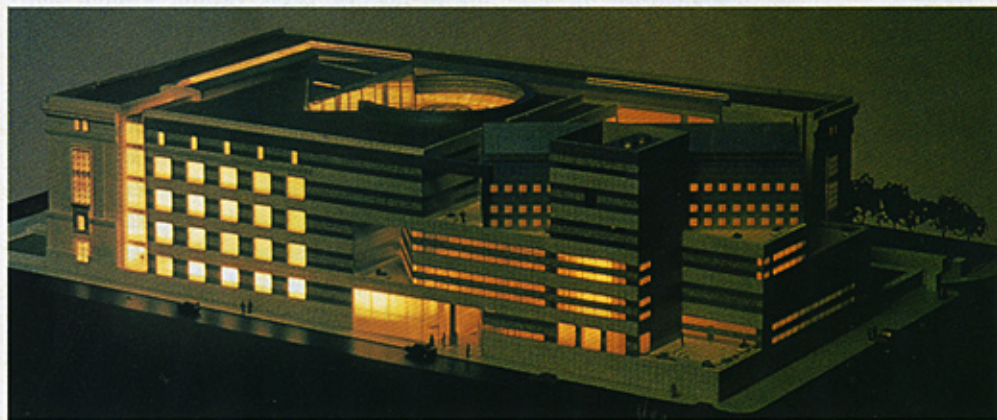
The crop of regional shows follows the close of the 3-year traveling exhibition "That Exceptional One: Women in American Architecture 1888-1988," which ended its national tour in Phoenix last July. The exhibition, which was the first to tell the story of American women in the profession, set out to counter the once widely-held view that only an extraordinary woman was capable of succeeding as an architect.

Principal of Ace Architects in Oakland, California, and exhibition juror Lucia Howard hopes that "Women's Work," a collection of drawings and photographs of projects by California architects and designers, will help debunk some of the myths associated with today's female architects: that they rely upon curvilinear forms; shy away from establishing hierarchy; and focus on details at the expense of larger concepts. The San Francisco exhibition includes Cathy Simon's design of the city's main library,



Barbara Wilks and Diane Cho of Cho, Wilks & Benn, a Baltimore firm responsible for new light rail stations (above), are exhibiting projects at the Baltimore chapter AIA this month. The San Francisco AIA chapter's "Women's Work" exhibition will feature San Francisco's main library (below), designed

by Cathy Simon of Simon Martin-Vegue Winkelstein Moris in conjunction with Pei Cobb Freed & Partners. Also included are Toby Levy's proposed renovation of the San Francisco Examiner building (bottom right) and a garden folly designed by landscape architect Lori Pottinger (bottom left).



D E T A I L S

The California team of **Bernardo Urquieta** and **Renzo Zecchetto** has been selected the winner in a two-stage competition to design a new \$35 million city hall building for Santa Clarita, California. **Adele Naude Santos** won a design competition for the civic center in Perris, California. Finalists included **Studio Works**; **William Turnbull Associates**; and **Anderson/Schwartz** in joint venture with **Venturi, Scott Brown & Associates**. **Hewitt/Isley Architects**, in association with **Jones & Jones**, has been selected by the Port of Seattle to design an 18-acre mixed-use waterfront project from a short list that included **Charles Moore**, **Robert A.M. Stern**, **Esherick Homsey Dodge & Davis**, and **Zimmer Gunsul Frasca**. The New York office of **Hellmuth, Obata & Kassabaum** has been selected to restore the Kuwait Parliament/National Assembly Building. **Thom Mayne** and **Michael Rotondi**, partners since 1975 of the Los Angeles-based **Morphosis**, have decided to pursue individual practices. Thom Mayne remains principal of **Morphosis**; **Michael Rotondi's** new firm will be called **Rotondi**. The Texas Rangers have named **David Schwarz Architectural Services** of Washington, D.C., to design a new stadium in Arlington, Texas (below). Schwarz will collaborate with sports architect **HNTB** and managing architect **HKS**. Schwarz was selected from a field of 17 firms, which included **Antoine Predock**; **Michael Graves**; **Kohn Pedersen Fox**; **Charles Moore/Arthur Andersen**; **Keating, Mann, Jernigan, Rottet**; **Hammond Beeby & Babka**; **Hardy Holzman Pfeiffer**; and **Lake/Flato**.

Women in Architecture Exhibit *continued from page 21*

and a church and AIDS memorial wall in Marina Del Ray by Diane Caughey.

Architect Rebecca Swanston, who curated the Baltimore show on display this month, expects "Women in Architecture" to attract public interest. The display includes projects by Cass Gottlieb, principal of G+F Architects, and Jo Anne Murray of Murray & Associates. Barbara Wilks and Diane Cho of the Baltimore firm Cho, Wilks & Benn will exhibit a housing project and a building housing their own offices.

Echoing this year's theme for the Puerto Rico AIA chapter's annual assembly, entitled "Women's Roles in Architecture," an exhibition will feature more than 40 projects by women practicing in Puerto Rico, the Caribbean, and Florida. Beatriz del Cueto, first woman president of the 25-year-old component, explained that the November 14-17 conference will examine why women rarely reach top positions. According to Del Cueto, who heads a 4-person firm specializing in historic preservation, women comprise the majority of students in Puerto Rican architecture schools, but after graduating "remain behind closed doors."

Rather than exhibit projects by local women, the New York AIA chapter's new Women in Architecture Leadership Network (WALN) will launch a program to identify and enhance areas of Manhattan in need of improvement. WALN will present its list to a panel of women experts in government, planning, and construction at the group's kickoff meeting on October 24.

"I think that we have not passed the point where we need to recognize women in architecture as a separate element," asserts Los Angeles architect Kate Diamond, who will moderate a panel on feminism and architectural values at the third annual Julia Morgan colloquium in Los Angeles on October 26. The event will also feature projects by women students at five Los Angeles architecture schools. In Diamond's view, the student exhibition plays a vital part in writing a "herstory" to parallel traditional architectural history. "We act like we are the first women architects that ever existed...most of us don't know how long and how rich a history of women architects there is, because they generally haven't made it into the mainstream architectural press." —KAREN SALMON



1



2



3



4

Iris González-Alfonzo of **Marvel, Flores, Cobian & Associates** will oversee construction of a 1-million-square-foot office/housing complex in San Juan's business district (1). **Maria Chalgub** and **Hortensia Lanio** of **St. Croix** designed the 187,000-square-foot **Ensenada Resort Condominiums** (2) for a beachfront site on the island's southwestern shore. Puerto Rican preservation architect **Beatriz del Cueto** restored a 19th-century Spanish lighthouse in **Fajardo** (3) and designed the entrance pavilion for the **Las Cabezas de San Juan Nature Reserve** (4).